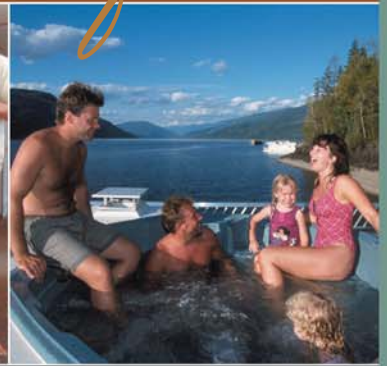


# CruiseCraft II



SLEEPING CAPACITY 15

The *CruiseCraft II* has proven to be a favourite among families within our rental fleet. Since first introducing the model five years ago, her popularity has not wavered – nor has the floorplan! Spacious and luxurious, the amenities aboard the *CruiseCraft II* appeal to a wide variety of groups and families looking for a houseboat vacation that provides value and luxury aboard a mid-sized vessel.

## *CruiseCraft II*

	\$248,564
GST	\$17,399
<b>TOTAL</b>	<b>\$265,963</b>

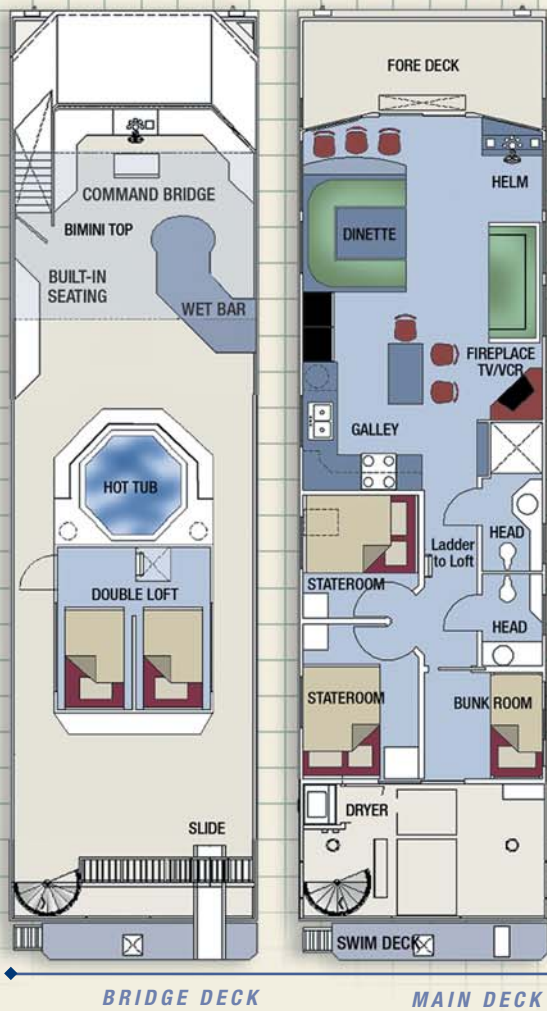




**Length** \_\_\_\_\_ 60'  
**Beam** \_\_\_\_\_ 14'6"  
**Weight** \_\_\_\_\_ 27,500 lb.  
**Fore Deck Length** \_\_\_\_\_ 6'  
**Aft Deck Length** \_\_\_\_\_ 9'  
**Head Room** \_\_\_\_\_ 84"  
**Draft (Pontoons)** \_\_\_\_\_ 20"  
**Bridge Clearance** \_\_\_\_\_ 20'6"

**TANKAGE**

**Fuel** \_\_\_\_\_ 250 US Gal.  
**Water** \_\_\_\_\_ 100 US Gal.  
**Holding** \_\_\_\_\_ 600 US Gal.



# CRUISE CRAFT II

**SLEEPS UP TO 15 PEOPLE**

## Main Deck

- 2 Staterooms with double beds
- 1 Bunk Room with a single bed and double bed
- Convert the sofa and dinette into 2 double beds
- 1 1/2 Baths (Sink, toilet, shower)
- Appliances including two 8 cu. ft. fridges, range, microwave, dishwasher and clothes dryer.
- Fireplace
- TV/CD/VCR Entertainment Centre
- Forward / Rear Access to Bridge Deck

## Bridge Deck

- Hot Tub
- Bimini Top
- Deluxe Wet Bar
- Double Penthouse with 2 double beds
- Suntan Area

