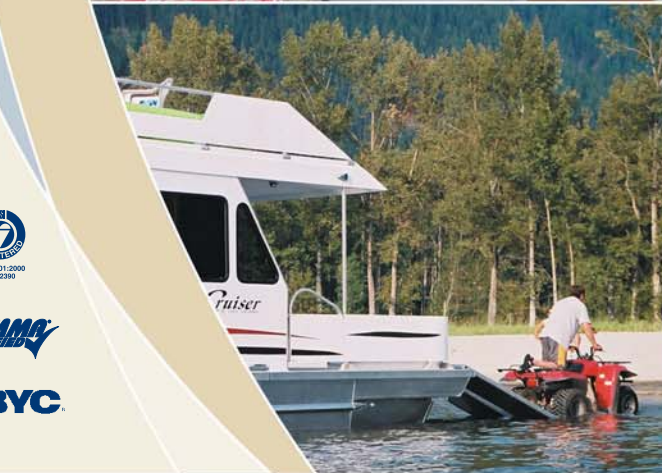




YOUR DREAMS. OUR PASSION.
 CUSTOM HOUSEBOATS BY TWIN ANCHORS MARINE



You'll find the houseboats created by Twin Anchors Marine are indeed people's second homes. Every houseboat is as individual as her owner. Today's boats are stunningly designed, superbly crafted, performance oriented and require low maintenance. So welcome aboard, enjoy the ride and remember; *your dreams are our passion.*

Leading the world of houseboating through customer satisfaction, employee commitment, innovative design and product excellence.



Camp Cruiser

675 OLD TOWN ROAD, PO BOX 318, SICAMOUS, BC, V0E 2V0 CANADA

1-800-558-0881 | twinanchors.com

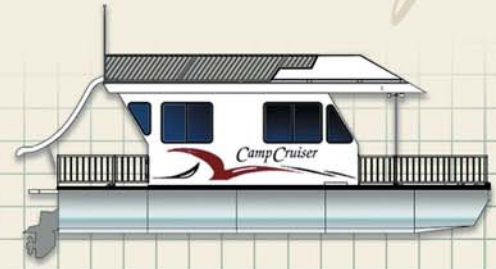
1-800-558-0881 | twinanchors.com

CAMP CRUISER

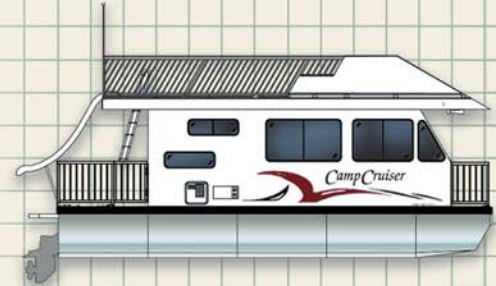
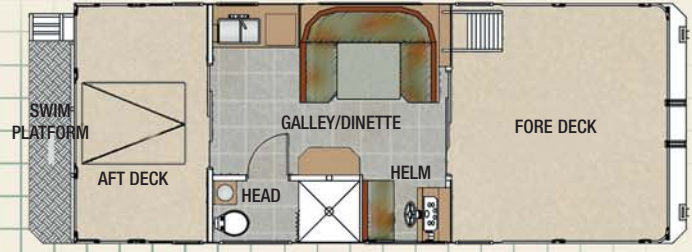
TWIN ANCHORS MARINE



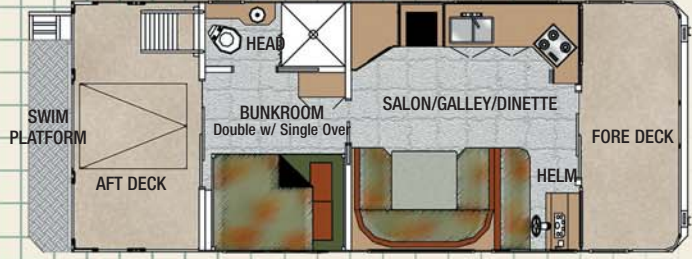
Camp Cruiser 3112



XE - ATV FLOORPLAN

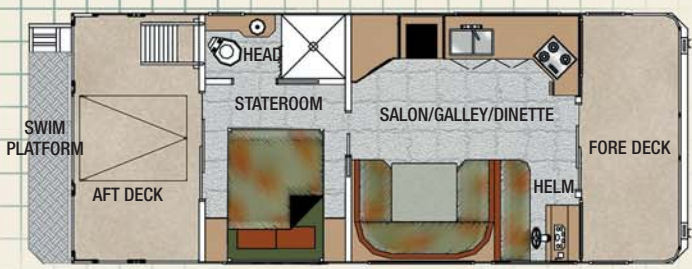


XLBR - BUNKROOM FLOORPLAN



Length _____	31'	FLOTATION
Fore Deck _____	5'	Aluminum pontoons
Cabin _____	18'	11' Circumference
Aft Deck _____	6'	Sealed Bulkheads
Swim Deck _____	1'9"	6' O.C.
Beam _____	12'	
Weight _____	12,000 lbs.	
TANKAGE		
Fuel _____	55 Gal.	
Holding _____	150 Gal.	
	(2 @ 75)	
Water _____	50 Gal.	

XLSR - STATEROOM FLOORPLAN



FOR MANUFACTURING INFO CALL **1-800-558-0881** OR VISIT twinanchors.com

NOTE: Drawings and photos may show optional equipment. Some standards vary on the XE-ATV model.



CAMP CRUISER 3112

STRUCTURAL

- 5' Wide Patio Doors w/ screens
- 3/4" FRP Cabin Structure
- 11'D pontoons full bulkheads @ 6' C.
- Fiberglass Engine Hatch
- Fiberglass Non-Skid Decks
- Boarding Ramp

RAILS, LADDERS & ACCESSORIES

- Aluminum Picket Rails
- 2' Swim Platform w/access ladder
- Waterslide
- Bridgedeck Table

MECHANICAL FEATURES & OPTIONS

- MerCruiser 3.0L I/O with Alpha Sterndrive
- Single Lever Mechanical Controls
- Full Instrumentation
- Hydraulic Steering System
- 4 KW Air Cooled Onan Generator

HEATING, COOLING & VENTILATION

- 13,500 BTU Air Conditioner
- 20,000 BTU Propane Furnace

PLUMBING FEATURES & OPTIONS

- Double Stainless Sink in Galley
- Shower - 36" x 36"
- Pressurized Water System
- Propane System
- Sealand Head
- Vanity Sink
- 2 Washdowns
- 10 Gal. Hot Water Heater

ELECTRICAL FEATURES & OPTIONS

- 12V Breaker Panel
- 12V Start Batteries
- 2 - 6V Cabin Batteries
- Solar Ready
- 1000 Watt Inverter
- 110V Outlets in Galley & Salon
- 12V Incandescent Lighting
- Satellite Ready

APPLIANCES & ELECTRONICS

- Entertainment Center
- AM/FM/CD - Cabin & Bridgedeck
- 8 cu.ft. Propane Fridge/Freezer
- Three Burner Propane Cooktop

CABIN FINISHING / FURNISHINGS

- Designer Wall/Ceiling Panelling
- Built-in Helm Seat w/storage
- Curtains on Patio Doors
- Solid Oak Moldings
- Convertible Dinette - sleeps 2
- Pleated Shades throughout

SAFETY

- Navigation Lights
- Sounding Horn
- Ships Bell
- Compass
- Auto Bilge Pumps
- Bilge Blower
- Propane and CO Detectors
- Depth Sounder / Fishfinder ready